

URBAN TREE



Emerald Enclave

MANAPAKKAM

**INFINITE
LOVE IS
IN THE PERFECT
INVESTMENT**



Always Sustainable.

ABOUT URBAN TREE

Urban Tree has created a distinct name for itself and is known for its penchant for creating homes and villa plots that are consistently international in quality.

With meticulous planning and detailed architectural nuances, we are committed to delivering the finest quality of life. This has empowered us to refine a customer-centric approach with the highest degree of integrity and transparency.

THE URBAN TREE ADVANTAGE



Luxury homes in prime locations, at affordable prices.



Quality uncompromised.



Green homes for healthier living.



100% transparency. No hidden charges.



We pay, if we delay.



Monthly newsletter with regular updates.



Regular customer meets every quarter.



2500+ delighted customers.



1 out of every 4 units is sold through customer referral.



Special discount for special citizens.



End-to-end relationship managers.



Stay connected with our mobile app.





Enjoy multifold returns
on a secure investment



Become a proud
land owner



Build customised
homes based on your
taste and preferences

Why buy a plot?

All your dreams and desires can be fulfilled
when you invest in the right developer,
the right property and the right location.



An investment
to secure your
family's future.

•
An investment for
your child's future.

•
An investment
for your future
retirement.



Only property investments
will get you loans at the
lowest interest rates



LOCATION MAP



IT HUBS

RMZ	4.4kms.
Commerzone	4.5kms.
DLF	3.3kms.
L&T	2.8kms.
Olympia Tech Park	5.3kms.
Guindy Industrial Park	6.3kms.

HEALTHCARE

MIOT	2.5kms.
Ramachandra	7.9kms.
Kedar Hospital	2.6kms.
Apollo Hospital	11kms.
Fortis Hospital	7.5kms.

EDUCATIONAL INSTITUTION

PSBB Millennium	3.5kms.
Omega International	2.8kms.
Chaitanya	700mtrs.
Velammal	1.6kms.
Pon Vidyashram	2.4kms.

SHOPPING MALL

Saravana Store	3.8kms.
Nexum Vijaya Mall	8kms.
Chandra Metro Mall	6kms.

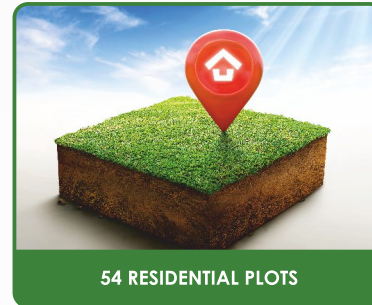
PROJECT HIGHLIGHTS



CLEAR TITLE



CMDA & RERA APPROVED



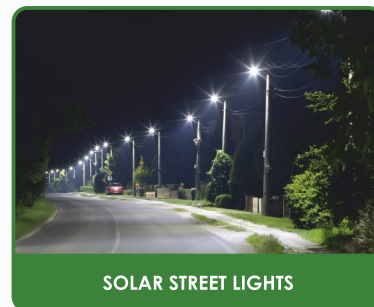
54 RESIDENTIAL PLOTS



SQ. FT. RANGE FROM
869 TO 1870



ENTRANCE ARCH



SOLAR STREET LIGHTS



AVENUE TREES AND LANDSCAPING



STORM WATER DRAIN



INDIVIDUAL PLOT BOUNDARY STONES



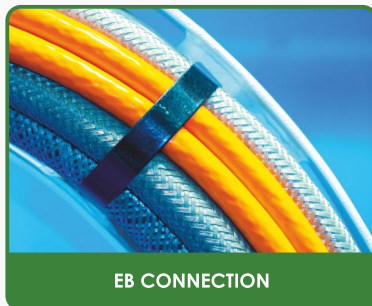
CCTV



STREET NAMES AND SIGNAGE



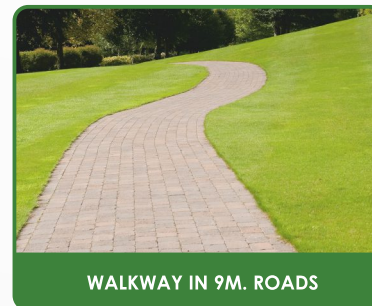
BITUMEN TOP ROAD



EB CONNECTION



SEWERAGE DRAIN



WALKWAY IN 9M. ROADS



SWEET GROUND WATER

SET AMIDST ALL YOUR NEEDS AND DESIRES



BIRDS EYE VIEW



NIGHT VIEW

RERA NO.: TN/29/LAYOUT/9180/2022 | DATED 24.11.2022 | WWW.RERA.TN.GOV.IN

PROJECT IS FUNDED BY
AND MORTGAGED WITH

TATA CAPITAL
HOUSING FINANCE LIMITED

HOME LOANS FROM



URBAN TREE GROUP

Suraj Kunj, No. 18 (Old No. 8B), 5th Street, Rutland Gate, Nungambakkam,
Chennai - 600 006, India. | www.urbantreehomes.com

Contact : 8807291899 | 9500019459

DISCLAIMER: This brochure is conceptual and not a legal offering. Visual representations such as floor plans, finishes, illustrations, pictures, photographs, and drawing herein are artist's representations. The company reserves the right to add, delete or alter any details without prior notice.



DIMENSIONS UNLIMITED

A JOINT INITIATIVE WITH
amberland